

# SBANG *Group*

*waste to Values*



# Contents

**1** SBANG PRIDE

**2** SBANG OVERVIEW

**3** SBANG BUSINESS AREAS

**4** SBANG SOLUTIONS AND SERVICES

**5** SBANG CULTURAL VALUES

**6** SBANG CORPORATE SOCIAL RESPONSIBILITY

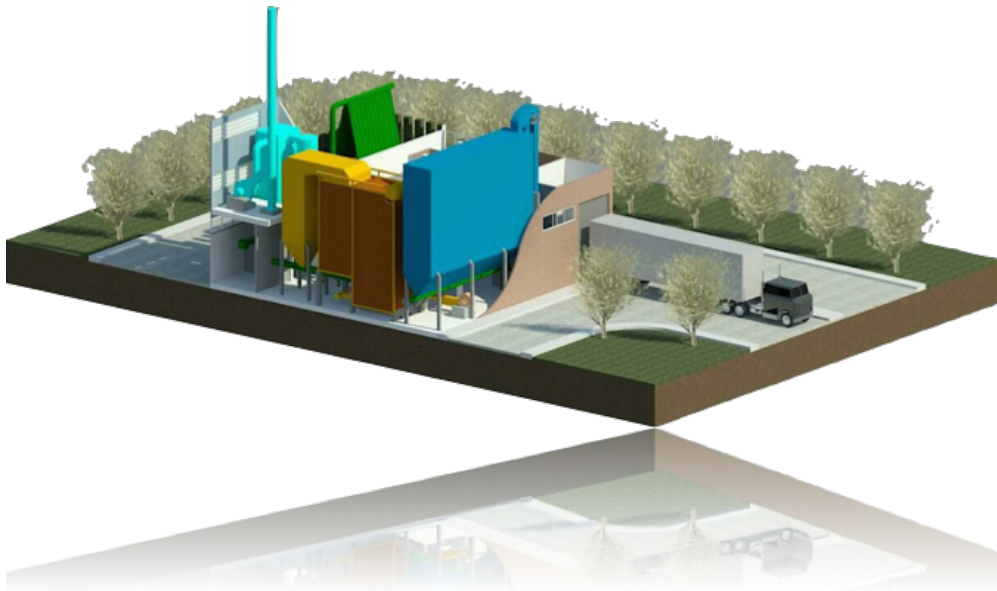


---

# 1 SBANG Pride

---

*“We are proud that our **BIOMASS** and **WASTE** to **ENERGY** power plants are part of a driving force to the global sustainable energy development.”*



**Establishment:** 2005

**Founder:** Mr. Saithsiri Saksitthisereekul

**Business Categories:** EPC turnkey system integrator for biomass power plant and waste-to-energy plant. Invest and operate power plants



**SBANG** started business as a subcontractor and later became an EPC turnkey service provider. We are well-known as turn-Key system integrator for renewable power plants for over a decade.

**Our focus** is on thermal power plants using biomass such as empty-fruit brunch, rubber tree roots & stumps, rice husk, corncobs etc. as well as RDF (Refuse- derived fuel) from municipal waste and industrial waste.

### 3 SBANG Business Areas

#### *3 Key business areas;*

i

Invest in, own and operate renewable power plant projects.

ii

EPC turn-key system integrator service for biomass power plants and waste to energy power plants.

iii

Engineering service and turn-key system integrator service Refuse-Derived Fuels (RDF) processing plants.



## 4 SBANG Solutions and Services

*“ Our service as turn-key system integrator comprises of (but is not limited to);*

1

**CONCEPTUAL AND  
DETAILS DESIGN**

2

**EQUIPMENT  
& PROCESS  
PROCUREMENT**

3

**CONSTRUCTION  
AND ERECTION**

4

**EQUIPMENT  
& INSTRUMENT  
INSPECTION AND  
TEST**

5

**PLANT  
COMMISSIONING  
AND PERFORMANCE  
TEST**

6

**OPERATION AND  
MAINTENANCE  
SERVICES**



## 5 SBANG Cultural Values



At **SBANG**, we create a culture and environment that encourages our staffs to work happily with work-life balance.

As we believe that a happy working environment helps stimulates new ideas and improvements in response to provide best performance for our partners as well as to survives economics turbulence and changes.



### Happy Organization

Sharing and Feedback



### Improvement and New ideas



## 6 SBANG Corporate Social Responsibility



**Provided  
Community  
Health Check up**



**Supported  
forestation of  
local community**



**Ask for blessing  
from elders in  
Songkran  
Festival**

### **SBANG** product and service connect with social and environment

**SBANG** is not only striving for economical benefit but we aim to raise the well-being of local communities where our plants are located.

We have initiated a voluntary power plant fund and let the local community manage the fund for the best interests of themselves.

Furthermore, **SBANG** has supported local agencies to develop their projects which help to support promotion of agricultural improvement that enhance farmers' livelihood and income.